

Osaki

Shoulder Heating Shawl

Heating & Vibration



Please read all instructions carefully before use this product.

KEEP ALL SAFETY NOTICES AND INSTRUCTIONS FOR FUTURE REFERENCE!

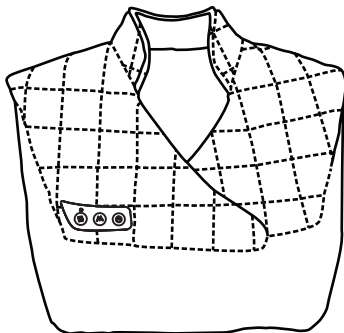
Before use

Remove all packaging material from the product and carefully examine the product before use. Plug the heating shawl into the power bank with a USB wire. Be sure the power bank is charged properly before connected.

(Noted: Power bank is not included in this package.)*

KEY Features

- Heating
- Two vibration modes
- A timer of 20 minutes to automatically shut off
- 100% Plush microfiber
- Portable power bank usage



Power button



Heat button



Mode button

OPERATAION

Power button

Press and hold the power button (2s) to turn on the unit, the indicator light on the heating button will turn green to show the product is on a standby status.

Long press the power button again to turn off the unit, then the indicator light goes off.

Heat button

When the green indicator light is above the heating button, it means that the heating function is on standby to use.

Press and hold the heating button (2s), then the indicator light will turn red and it is ready to mildly heat the backrest.

Press heat button for the second time to turn off the heat function, the indicator light will turn green.

Mode button

The shoulder heating shawl has two vibration modes.

Press the mode button the first time to choose mode 1, then press the mode button second time to change to mode 2.

Press mode button the third time to turn off the vibration function.

Note: *There is a 20 minutes auto shut-off on this product for your safety. This feature should not be considered as a substitute for OFF. Always remember to switch the unit off when not in use.*

SAFETY ADVICE

Read all safety advice and instructions. Non-observance of the safety advice and instruction may cause electric shock, fire and or bad injuries.

KEEP ALL SAFETY NOTICES AND INSTRUCTIONS FOR FUTURE REFERENCE!

Never leave children unsupervised with the packaging materials. The packaging material poses a suffocation hazard. Children frequently underestimate the dangers. Please always keep the product out of the reach of children.

This product is not a toy for children! Children are not aware of the dangers associated with handling electrical products.

This product can be used by children aged from 8 years and above and persons with reduced physical, sensory or mental capabilities or lack of experience and knowledge if they have been given supervision or instruction concerning use of the product in a safe way and understand the hazards involved.

The product has a heated surface. Persons insensitive to heat must be careful when using it. Make sure the details on the rating label are in conformity with your main voltage.

Avoid electric shock.

Do not insert needles or pointed objects into the product.

Never immerse the product into water or any liquid.

Never touch the product, or the adaptor with wet hands or use it in very humid environments.

Only use the provided adaptor as described in Technical Data section.

In the event of malfunctions, remove the mains power adaptor from the mains socket.

Do not open the product or attempt to repair it yourself. Defective products should only be repaired by a qualified person.

Always remove the adaptor from the mains socket after each use.

Keep the power cord away from hot surfaces, sharp edges and mechanical forces.

Never let the power cord become a tripping hazard, Make sure that no-one can get tangled in it or tread on it.

Allow the product to cool down before moving it to a different location.

Do not operate the product close to or below curtains, wall cupboards, or other inflammable materials.

Do not use the product on swollen, burnt, inflamed, diseased, or injured regions of the skin and body areas. If in doubt, obtain medical advice before using the product.

Care and Storage

Never immerse the product or adaptor into water.

Ensure the product is completely dry before connecting the adaptor.

The product is NON-WASHABLE. Never allow any liquid to enter the product.

If product would not be used for a certain period, store the product in the clean and dry location.

Company Information

Osaki

Contact Number: 1-888-848-2630

Website: www.titanchair.com