

# USER MANUAL

**AmaMedic** AM-61

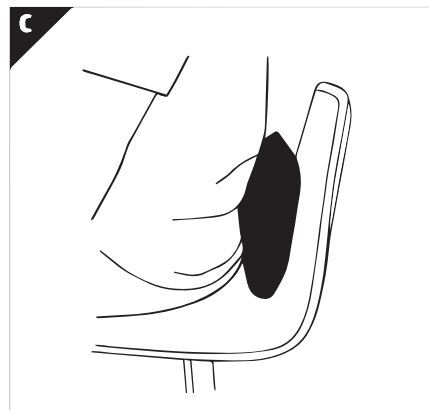
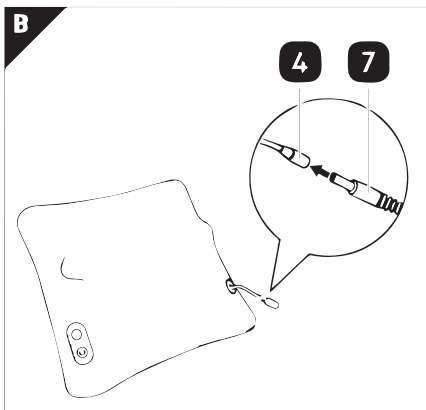
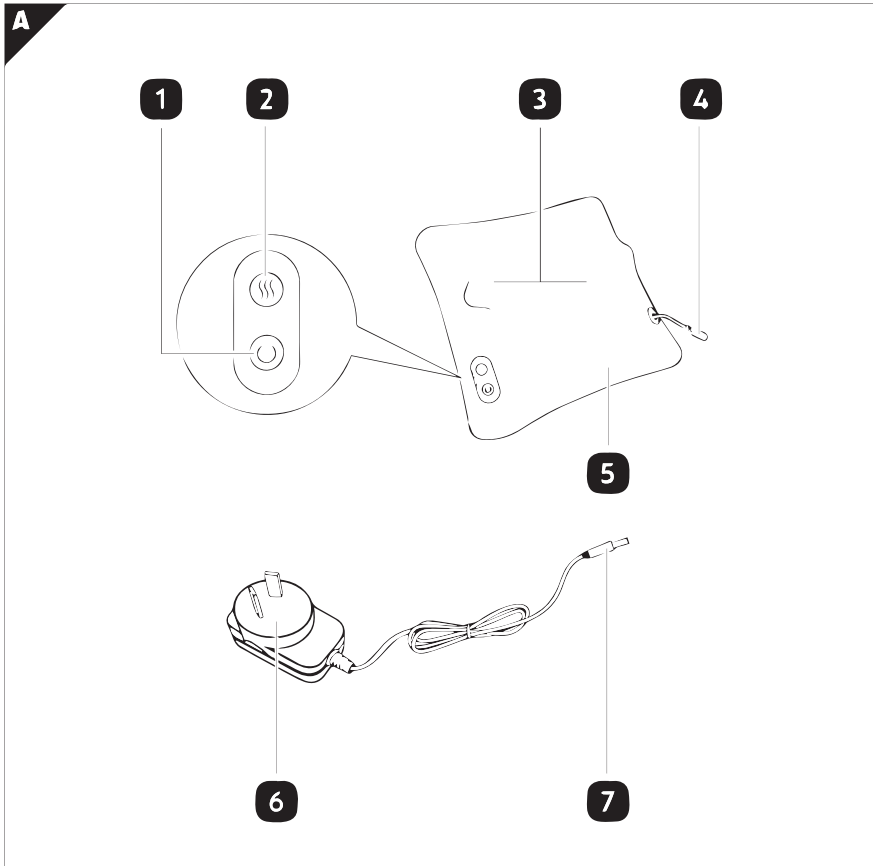
## SHIATSU MASSAGE CUSHION



# TABLE OF CONTENTS

Scope of delivery .....	3
Components .....	4
General information .....	5
Reading and storing the user manual .....	5
Proper use .....	5
Explanation of symbols .....	5
Quick Start Guide .....	7
Safety .....	8
Signal symbol/word definitions .....	8
Checking the product and package contents .....	12
Operation .....	12
Preparing for use .....	12
Turning the product on or off .....	12
Using the warming function .....	13
Changing the rotation direction .....	13
Troubleshooting .....	13
Cleaning .....	13
Storage .....	15
Technical data .....	15
Disposal .....	16
Disposing of the packaging .....	16
Disposing of the product .....	16

## SCOPE OF DELIVERY



## **COMPONENTS**

- 1 On/off button
- 2 Warming function button
- 3 Massage head, 4×
- 4 Connection socket
- 5 Removable cover (pre-installed on the product)
- 6 Mains adapter
- 7 Connection plug

## General Information

### Reading and storing the user manual



This user manual accompanies this shiatsu back massage cushion (hereafter referred to as the “product”), and contains important information on setup and handling.

Before using the product, read the user manual carefully. This particularly applies to the safety instructions. Failure to do so may result in personal injury or damage to the product.

Store the user manual for further use. Make sure to include this user manual when passing the product on to third parties.

### Proper use

The product is exclusively designed for massaging the back of people. It is only intended for private use and not suitable for commercial purposes. The product is not a children’s toy.

Only use the product as described in this user manual. Any other use is considered improper and may result in damage to property or persons.

The manufacturer or vendor cannot be held liable for damages or injury incurred through improper or incorrect use.

### Explanation of symbols

The following symbols are used in this user manual, on the product or on the packaging.



This symbol provides you with useful additional information on handling and use.



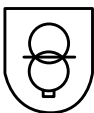
This symbol identifies voltage and the current rating for direct current.



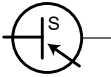
These symbols indicate the polarity of the barrel plug: outside (-), inside (+).



Protection class II (mains adapter).



The mains adapter is equipped with a short-circuit proof safety transformer.



The mains adapter has a switching power supply.



The mains adapter may only be used in indoor spaces.

**IP20**

The mains adapter is protected against contact with fingers or against the penetration of solid bodies with diameter greater than 12 mm. No protection against penetrating water.



The international efficiency mark indicates that the power supply meets the level VI requirements (mains adapter).



The RCM Mark (Regulatory Compliance Mark) indicates that the product complies with the relevant guidelines of the ACMA as well as corresponding government requirements for the safety of electrical devices.



This symbol provides electrical data regarding fuses.



Gently wash the removable cover at or below 30 °C.



The removable cover is not suitable for bleaching.



The removable cover is not suitable for being dried in a tumble dryer.



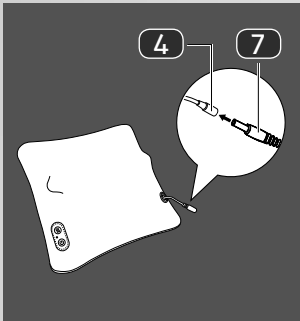
The removable cover is not suitable for ironing.



The removable cover is not suitable for dry cleaning.

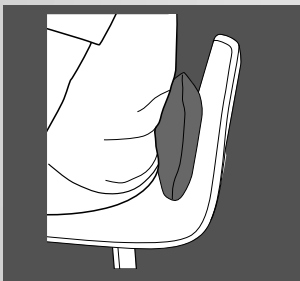
## QUICK START GUIDE

### Three simple steps to start massaging



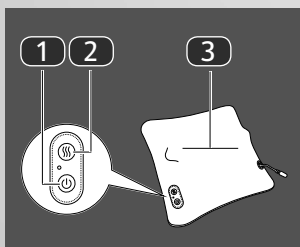
#### 1. Connecting the mains adapter to the product and mains socket

- Insert the connection plug **7** of the mains adapter into the connection socket **4** on the product.
- Plug the mains adapter **6** into a properly installed mains socket.



#### 2. Placing the product on a chair

- Place the product on a chair. Sit on the chair and position the massage heads **3** at the desired location to be massaged.



#### 3. Using the control buttons

- On/off button **1**: Press to turn the product on or off.
- Warming function button **2**: Press repeatedly to turn the warming function of the massage heads **3** on or off as desired.

**Read all safety notes in this user manual before use.**

It is imperative that you observe all safety notes in the user manual.

## Safety

### Signal symbol/word definitions

The following symbols and signal words are used in this user manual.



This signal symbol/word designates a hazard with moderate risk, which may result in death or severe injury if not avoided.



This signal word warns of possible damage to property.

### General safety instructions



#### Risk of electric shock!

A faulty electrical installation, excessive line voltage, or incorrect operation may result in an electric shock.

- Only connect the product if the line voltage of the mains adapter corresponds to the data on the rating plate.
- Only connect the mains adapter to an easily accessible socket so that you can quickly disconnect it from the mains supply in the event of a problem.
- Do not use the product if it is damaged or if the cord of the mains adapter or plug is defective.
- The flexible cord cannot be replaced. If the cord is damaged, the product should be disposed of.
- Do not open the housing; instead, have a qualified professional perform repairs. Contact a qualified workshop for this. Liability and warranty claims are waived in the event of repairs performed by the user, improper connection or incorrect operation.
- Only parts that comply with the original device data may be used for repairs. This product contains electrical and

---

mechanical parts which are essential for providing protection against sources of danger.

- Only use the product with the supplied mains adapter.
- The supplied mains adapter can only be connected to the product. Do not use it for other purposes.
- Do not use the product with an external timer or separate remote control system.
- Do not immerse the product, the mains adapter, or the mains cord in water or other liquids.
- Never touch the mains adapter with wet or damp hands.
- Do not pull the mains adapter out of the socket by the cord; instead, always pull it out by the adapter itself.
- Never move, pull, or carry the product by its mains cord.
- Keep the product, the mains adapter, and mains cord away from open flames and hot surfaces.
- Lay the mains cord so that it does not pose a tripping hazard.
- Do not kink the mains cord and do not lay it over sharp edges.
- Only use the product indoors. Do not use the product in damp rooms or in the rain.
- Do not place the product such that there is a risk of it falling into a tub or sink.
- Never reach to retrieve an electrical device if it has fallen into water. In such a case, immediately disconnect the mains plug.
- Never insert any objects into the housing.
- Always switch the product off and unplug it when you are not using it, when you intend to clean it, or in the event of a malfunction.
- The appliance has a heated surface. Persons insensitive to heat must be careful when using the appliance.



**WARNING!**

**Danger for children and persons with impaired physical, sensory or mental capacities (e.g. partially disabled persons, older persons with reduced physical and mental capacities), or lack of experience and knowledge (e.g. older children).**

- This product is not intended for use by persons (including children) with reduced physical, sensory or mental capabilities, or lack of experience and knowledge, unless they have been given supervision or instruction concerning use of the product by a person responsible for their safety. Children should be supervised to ensure that they do not play with the product. Cleaning and user maintenance must not be performed by unsupervised children.
- Keep children under the age of eight away from the product and mains adapter.
- Do not leave the product unattended while in use.
- Make sure that children do not play with the plastic wrapping. They may get caught in it when playing and suffocate.



**WARNING!**

**Risk of injury!**

If you do not use the product properly, there is an increased risk of injury.

- The product has a warming function. Persons insensitive to heat must be careful when using it.
- Do not cover the mains adapter during operation as it may get very hot. There is a risk of fire if the heat produced by the mains adapter cannot be dissipated.
- Do not use the product under a blanket or pillow. The product may get overheated and increase the risk of fire.
- Do not use the product if you have injuries or pain at the back.

- Stop using the product if you feel pain during use.
- Do not use the product on swollen, burnt, inflamed, infected or injured regions of the skin and body areas. If in doubt, obtain medical advice before using the product.
- Do not use the product for therapeutic purposes.

### **NOTICE!**

#### **Risk of damage!**

Improper handling of the product may result in damage to the product.

- Avoid the build-up of heat by not placing the product under a blanket or pillow.
- Never place the product on or near hot surfaces (stovetops, etc.).
- Ensure that the cord of the mains adapter does not come into contact with hot parts.
- Never expose the product to high temperatures (heaters, etc.) or to the effects of the weather (rain, etc.).
- Never fill the product with liquid.
- Never attempt to clean the product or the mains adapter by immersing them in water and do not use a steam cleaner to clean them. Otherwise, you could damage the product and the mains adapter.
- Never clean the product in a washing machine. It would be destroyed as a result.
- Stop using the product if its plastic parts exhibit cracks or breaks or are deformed. Only replace damaged parts with corresponding original spare parts.

## Checking the product and package contents

### NOTICE!

#### Risk of damage!

If you are not cautious when opening the packaging with a sharp knife or other pointed object, you may quickly damage the product.

– For this reason, be very careful when opening it.

1. Take the product out of the packaging.
2. Check to make sure that all parts are included (see **Fig. A**).
3. Check whether the product or individual parts are damaged. If this is the case, do not use the product. Contact the manufacturer via the service address indicated on the warranty card.

## Operation



- The product will automatically turn off after approx. 15 minutes. Do not use the product for more than 15 minutes at a time. A longer massage may lead to tension caused by overstimulation of the muscles.
- After the product turns off automatically, keep it turned off for 15 minutes before using it again.
- Always keep the removable cover **5** on the product during use and wash the removable cover as necessary.

## Preparing for use

1. Insert the connection plug **7** of the mains adapter **6** into the connection socket **4** on the product (see **Fig. B**).
2. Plug the mains adapter into a properly installed mains socket.
3. Place the product on a chair. Sit on the chair and position the massage heads **3** at the desired location to be massaged (see **Fig. C**).

## Turning the product on or off

- Press the on/off button **1** to turn on the product.
- By default, the massage heads **3** rotate downwards, and the warming function activates (massage heads light up).
- Press the on/off button again to turn off the product.

## Using the warming function

- When the product is turned on, the warming function activates (massage heads light up) by default.
- Press the warming function button **2** repeatedly to turn the warming function on or off as desired.

## Changing the rotation direction

- During the massage, the massage heads **3** automatically change the direction in which they rotate (upwards or downwards) once every minute.

## Troubleshooting

Problem	Possible cause	Solution
The product does not work.	The mains adapter <b>6</b> is not connected to a mains socket.	Connect the mains adapter to a properly installed mains socket.
	The connection plug <b>7</b> is not plugged into the connection socket <b>4</b> .	Insert the connection plug into the connection socket.

## Cleaning



### Risk of electric shock!

Improper handling of the product may result in an electric shock.

- Always unplug the mains adapter from the mains socket and disconnect the connection socket before cleaning the product. Never immerse the product or the mains adapter in water or other liquids.
- The product requires little maintenance. It contains no user serviceable parts. Do not try to repair it yourself. Contact a qualified professional if the product requires servicing.

**NOTICE!**

**Risk of short circuit!**

Water or other liquids that have penetrated the housing may cause a short circuit.

- Make sure that no water or other liquids penetrate the housing.
- Never immerse the product or the mains adapter in water or other liquids.

**NOTICE!**

**Risk of damage!**

Improper handling of the product may result in damage.

- Do not use any aggressive cleaners, brushes with metal or nylon bristles, or sharp or metallic cleaning utensils such as knives, hard scrapers and the like. They could damage the surfaces.
  - Never clean the product in a washing machine. It would be destroyed as a result.
1. Disconnect the mains adapter **6** from the mains socket and unplug the connection plug **7** from the connection socket **4** before cleaning.
  2. Completely open the zip on the removable cover **5** and take it off the product.
  3. Wash and dry the removable cover in accordance with the cleaning symbols on the label. Replace the removable cover on the product after cleaning and drying.



Gently wash the removable cover at or below 30 °C.



The removable cover is not suitable for bleaching.



The removable cover is not suitable for being dried in a tumble dryer.



The removable cover is not suitable for ironing.



The removable cover is not suitable for dry cleaning.

4. Use a damp cloth to wipe off the rest of the product. Then let all parts dry completely.

## Storage

All parts must be completely dry before being stored.

- Always store the product in a dry area.
- Protect the product from direct sunlight.
- Store the product so that it is not accessible to children.

## Technical data

### Massager

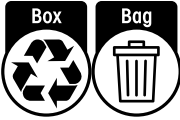
Model:	AM-61 Shiatsu Massage Pillow
Rated voltage:	12 V ===
Rated power:	18 W
Dimension:	Approx. 12.3 x 8.12 x 3.15 inch
Weight:	Approx. 3.57 lbs (with adaptor)
Duration of use:	Max. 15 minutes (automatic shut-off)

### Mains adapter

Input voltage:	100-240 V~, 50/60 Hz
Input current:	0.6 A
Output voltage:	12 V ===
Output current:	1,500 mA
Protection class:	II □

## Disposal

### Disposing of the packaging



Sort the packaging before you dispose of it. Dispose of paperboard and cardboard with the recycled paper service and wrappings with the appropriate collection service.

### Disposing of the product

- Should the product no longer be capable of being used at some point in time, **dispose of it in accordance with the regulations in force in your city or county.**
- Please ensure your recycling information applies to the local regulations.